

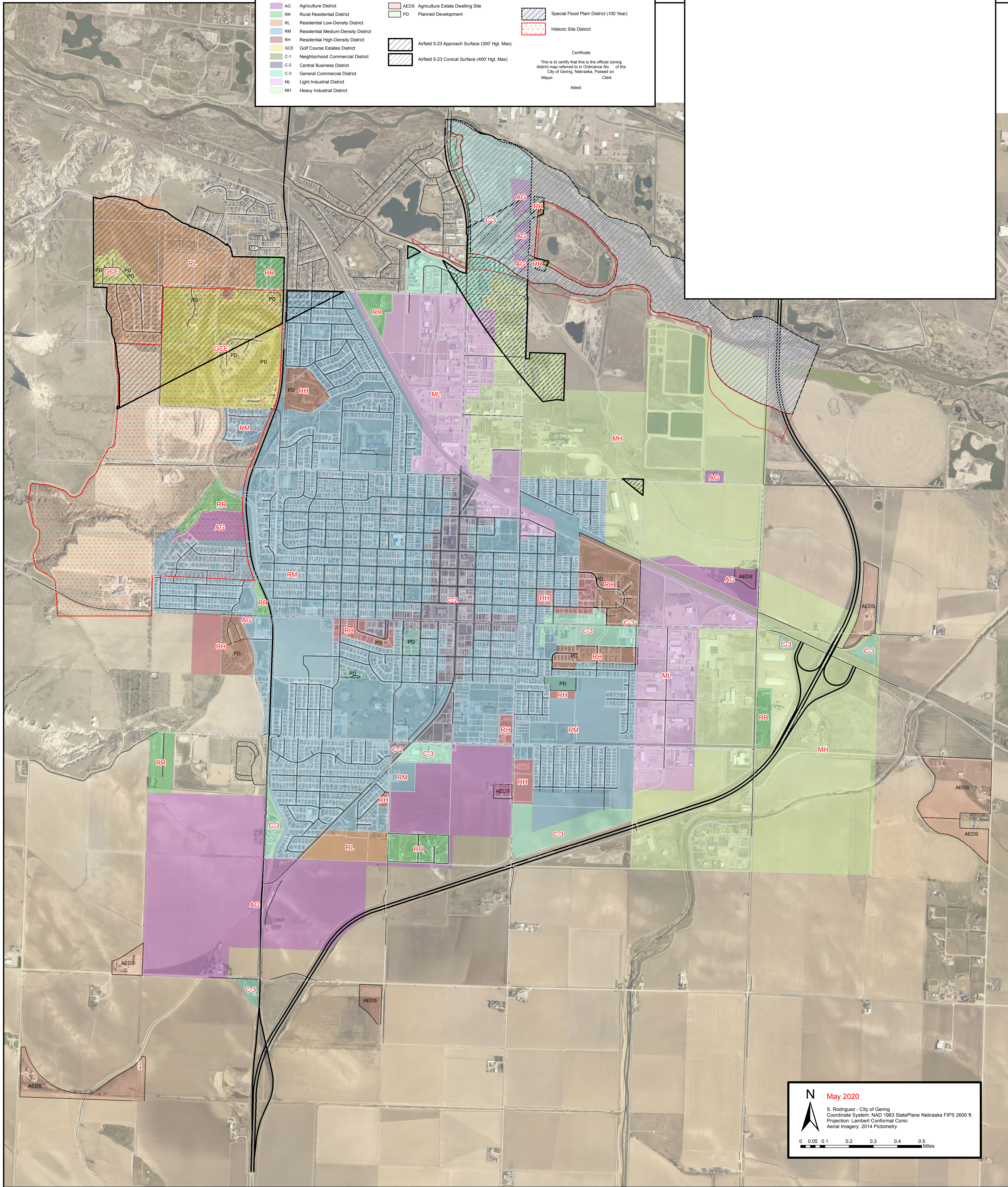
City of Gering Zoning Map

Amendments

Date	Type	Description	Mayor	Attest	Ord. No.

Legend

- | | | |
|-------------------------------------|--|---|
| Agriculture District | Agriculture Estate Dwelling Site | Special Flood Plain District (100 Year) |
| Rural Residential District | Planned Development | Historic Site District |
| Residential Low-Density District | Airfield 5-23 Approach Surface (300' Hgt. Max) | Certificate |
| Residential Medium-Density District | Airfield 5-23 Conical Surface (400' Hgt. Max) | <small>This is to certify that this is the official zoning district map referred to in Ordinance No. _____ of the City of Gering, Nebraska, Passed on _____</small> |
| Residential High-Density District | | <small>Mayor _____ Clerk _____</small> |
| Golf Course Estates District | | <small>Attest: _____</small> |
| Neighborhood Commercial District | | |
| Central Business District | | |
| General Commercial District | | |
| Light Industrial District | | |
| Heavy Industrial District | | |



May 2020
 S. Rodriguez - City of Gering
 Coordinate System: NAD 1983 StatePlane Nebraska FIPS 2600 ft.
 Projection: Lambert Conformal Conic
 Aerial Imagery: 2014 Pictometry

 0 0.05 0.1 0.2 0.3 0.4 0.5 Miles