

## **ORDINANCE NO. 2172**

**AN ORDINANCE OF THE CITY OF GERING, NEBRASKA, AMENDING TITLE VII, TRAFFIC CODE; CHAPTER 76: EMERGENCY SNOW REMOVAL; OF THE CITY OF GERING CODE OF ORDINANCES REPEALING ALL ORDINANCES IN CONFLICT; AND PROVIDING FOR AN EFFECTIVE DATE HERE OF.**

**BE IT ORDAINED BY THE MAYOR AND CITY COUNCIL OF THE CITY OF GERING, NEBRASKA:**

**Section 1.** That Title VII: Traffic Code be amended by adding the following:

### **EMERGENCY SNOW REMOVAL**

#### **§ 76.01 INTRODUCTION**

Due to the location of Gering, Nebraska, snow, ice, or freezing rain can be expected between September through April each year. Snow and ice control is basically emergency work in which City streets must be cleared at any time of the day or night. Since snow and ice removal is considered an emergency service by the City of Gering, the City of Gering shall undertake operations using the methods, resources, and equipment necessary to keep access to the City as open as possible during snow events.

#### **§ 76.02 SNOW EMERGENCY DECLARATION**

(A) A snow emergency is defined as a special condition of a snowfall event requiring residents to move their vehicles off the Emergency Snow Routes to accommodate emergency snow removal.

(B) A snow emergency declaration allows for the towing of vehicles from the Emergency Snow Routes. A snow emergency is normally declared after a measurable snowfall of four (4) inches or more; however, any amount of snow combined with ice, rain, and/or wind can also require a snow emergency to be declared.

(C) The City Administrator or his or her designee may declare a snow emergency. A snow emergency may be declared in advance of an anticipated storm, to start at a specific time; or a snow emergency may be declared anytime during or after a storm. A snow emergency will normally not last more than 72 hours past the end of the last snowfall.

(D) That a snow emergency has been declared will be communicated to the public through mass media outlets and the City's website as deemed appropriate by the City Administrator, Transportation Superintendent or Public Works Director.

(E) During a declared snow emergency, snow removal equipment engaged in the process of snow removal shall be considered an emergency vehicle. The driver of any other vehicle shall yield the right of way to snow removal equipment engaged in the process of snow removal.

#### **§ 76.03 PRIMARY EMERGENCY SNOW ROUTES**

(A) A system of marked Emergency Snow Routes has been established to maintain the flow of traffic, goods and services to the City of Gering on thoroughfare streets. The marked Primary Emergency Snow Routes are established as follows:

#### **PRIMARY EMERGENCY SNOW ROUTES**

10<sup>th</sup> Street from J Street to U Street

10<sup>th</sup> Street (Scottsbluff/Gering Highway) from U Street to the river bridge

M Street/Old Oregon Trail from the Cemetery Road east to Highway 71 bypass

Kimball Avenue from Five Rocks Road to J Street

Five Rocks Road from Robidoux Road to Country Club Road

U Street from Five Rocks Road to 10<sup>th</sup> Street

U Street from 7<sup>th</sup> Street east to 21<sup>st</sup> Avenue

S Street from 10<sup>th</sup> Street to 7<sup>th</sup> Street

7<sup>th</sup> Street from M Street to Country Club Road

Country Club Road from 10<sup>th</sup> Street to 7<sup>th</sup> Street

Lockwood Road from Hwy 71 to M Street  
21<sup>st</sup> Avenue from M Street to the North Platte River bridge

(B) Modifications to Ban. The foregoing prohibition shall be modified within the area of the Downtown Business District designed for parking and more particularly described as follows:

- (1) 10<sup>th</sup> Street from K Street to S Street;
- (2) M Street from 9<sup>th</sup> Street to 14<sup>th</sup> Street.

(C) The foregoing prohibition shall not apply to the above-described area during the business hours of six o'clock (6:00) a.m. to seven o'clock (7:00) p.m.

#### **76.04 SECONDARY EMERGENCY SNOW ROUTES AND PARKING LIMITATIONS**

(A) A secondary Emergency Snow Route is defined as a well-traveled road that provides access to major streets (primary snow routes) and is plowed after the primary routes, but before less-used residential streets, to maintain essential transportation for emergency services and commuters. These routes are often collector streets or minor arterials and are plowed to allow continued access to neighborhoods.

(B) Once a snow emergency is declared, parking where normally allowed on both sides of a street, is allowed only on the odd or even numbered sides of the street on all Secondary Emergency Snow Routes. Citations may be issued to citizens who have their vehicles parked on the wrong side of the street.

(C) The secondary Emergency Snow Routes are established as follows:

#### **SECONDARY EMERGENCY SNOW ROUTES**

<b><u>Street</u></b>	<b><u>Side of street on which vehicles should be parked during a snow emergency event</u></b>
8 <sup>th</sup> Street from R Street to S Street	ODD numbered side
9 <sup>th</sup> Street from K Street to S Street	ODD numbered side
11 <sup>th</sup> Street from N Street to U Street	ODD numbered side
14 <sup>th</sup> Street from Q Street to R Street	ODD numbered side
17 <sup>th</sup> Street from U Street to Kings Road	ODD numbered side
17 <sup>th</sup> Street from D Street to M Street	ODD numbered side
17 <sup>th</sup> Street from M Street to U Street	ODD numbered side
Flaten Avenue from Ponder Place to Pacific Blvd.	ODD numbered side
Ponder Place from Flaten Drive to Nelson Avenue	ODD numbered side
Chinoe Road from Country Club Road to Nelson Ave.	ODD numbered side
Q Street from 7 <sup>th</sup> Street to 17 <sup>th</sup> Street	ODD numbered side
D Street from Kimball Avenue to Five Rocks Road	ODD numbered side
K Street from 5 <sup>th</sup> Street to 12 <sup>th</sup> Street	ODD numbered side
12 <sup>th</sup> Street from K Street to Q Street	ODD numbered side

<b><u>Street</u></b>	<b><u>Side of street on which vehicles should be parked during a snow emergency event</u></b>
13 <sup>th</sup> Street from P Street to U Street	EVEN numbered side
R Street from 12 <sup>th</sup> Street to 15 <sup>th</sup> Street	EVEN numbered side
R Street from 8 <sup>th</sup> Street to 9 <sup>th</sup> Street	EVEN numbered side
Pacific Blvd. from U Street to Davis Avenue	EVEN numbered side
Nelson Avenue from Pacific Blvd. to Ponder Place	EVEN numbered side
Donna Drive from Flaten Avenue to Nelson Drive	EVEN numbered side

**§ 76.05 DRIVEWAYS AND SNOW REMOVAL FROM PRIVATE PROPERTY**

(A) City snowplows will not clear private driveways. The snow placed in driveways by City plows is a natural result of clearing the streets and is the responsibility of the property owner to remove.

(B) Only on Emergency Snow Routes, when plowed windrows exceed 24 inches, if time and conditions allow, the City will attempt to plow open private driveways at the curb line.

(C) Snow from a private driveway, private sidewalk, business driveway, or parking lot may not be placed on a City street. Penalty see § 10.99.

(D) City equipment will not be used to remove piled snow or push snow away from private property or businesses. Snow will only be removed from City facilities. Using City equipment to clear snow from private property is a violation of this code unless it is necessary to allow emergency vehicles access to the private property for ambulance, fire or police calls.

**§ 76.06 VEHICLE TOWING DURING DECLARED SNOW EMERGENCIES**

Vehicles parked on a designated Primary or Secondary Emergency Snow Route street during a declared snow emergency are subject to tow without notice to the owners, and at the owners' expense. In addition, if a vehicle is left on a public street or alley on a designated snow route in such a fashion as to hinder snow removal, that vehicle may be towed at the expense of the owner of the vehicle, provided that an attempt was made to contact the owner to have the vehicle moved; and that either the owner could not be located, or the owner was contacted, that the owner of the vehicle failed to move the vehicle within fifteen (15) minutes after being contacted.

**§ 76.99 PENALTY**

(A) Violation of this ordinance shall be punishable by a \$250.00 (two hundred fifty dollar) fine.

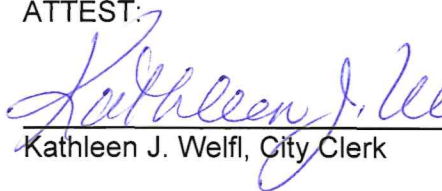
**Section 2.** Any ordinance or part of any ordinance in conflict with this ordinance is hereby repealed to the extent of such conflict and should any part or section of this ordinance be declared void and unenforceable, such declaration shall not render any other part void and unenforceable.

**Section 3.** This Ordinance shall be in full force and effect from and after the date of its passage, approval and publication as provided by law.

PASSED AND APPROVED THIS 24<sup>th</sup> DAY OF November, 2025.

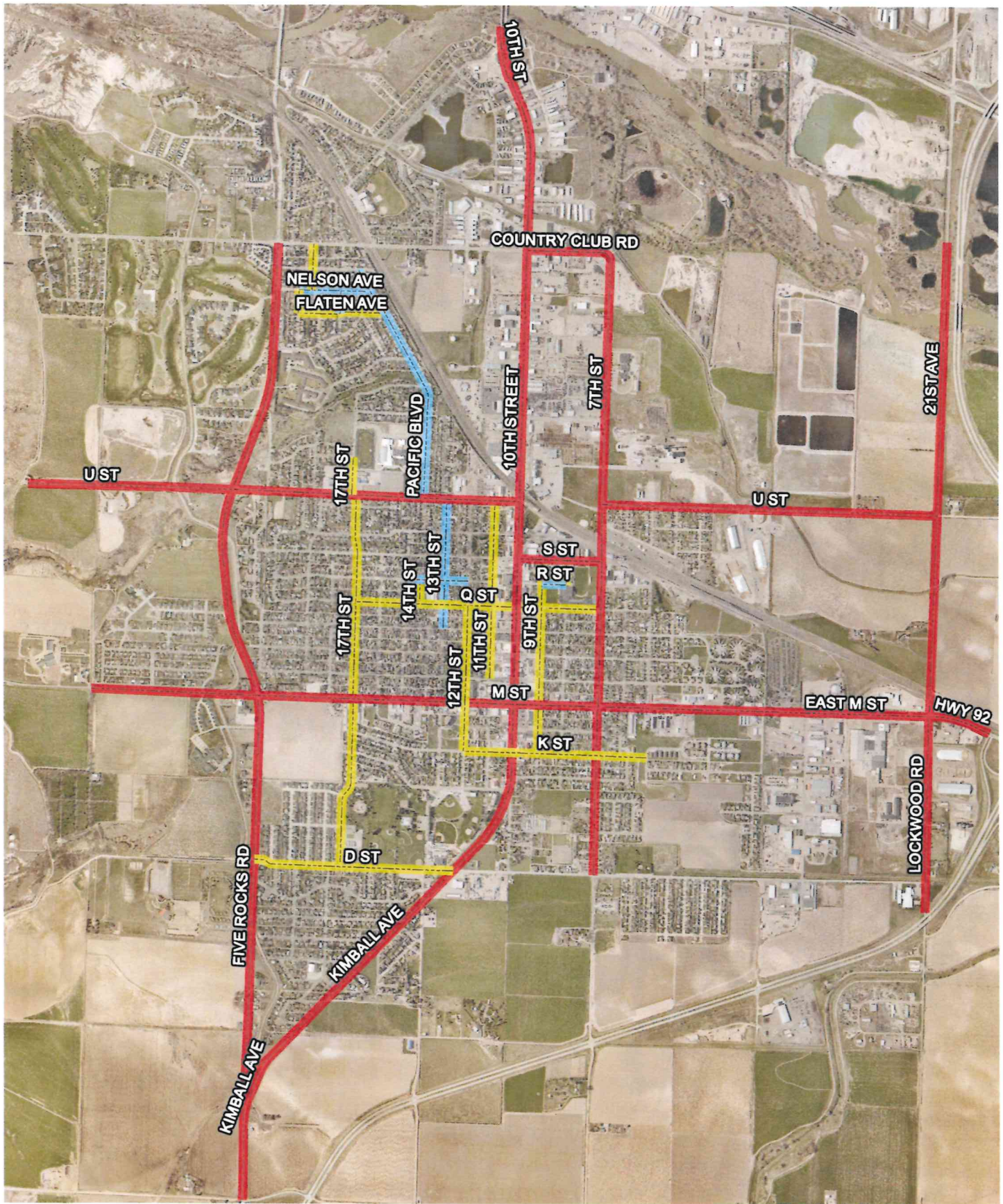
  
Kent E. Ewing, Mayor

ATTEST:

  
Kathleen J. Welfl, City Clerk







# LEGEND

- Primary Emergency Snow Routes
- Secondary Emergency Snow Routes  
Parking on Even Numbered Street Side
- Secondary Emergency Snow Routes  
Parking on Odd Numbered Street Side

## EMERGENCY SNOW ROUTES

Engineering and Mapping Department City of Gering

NORTH

LINEAR SCALE (MILES)

0 0.125 0.25

